

A

B

C

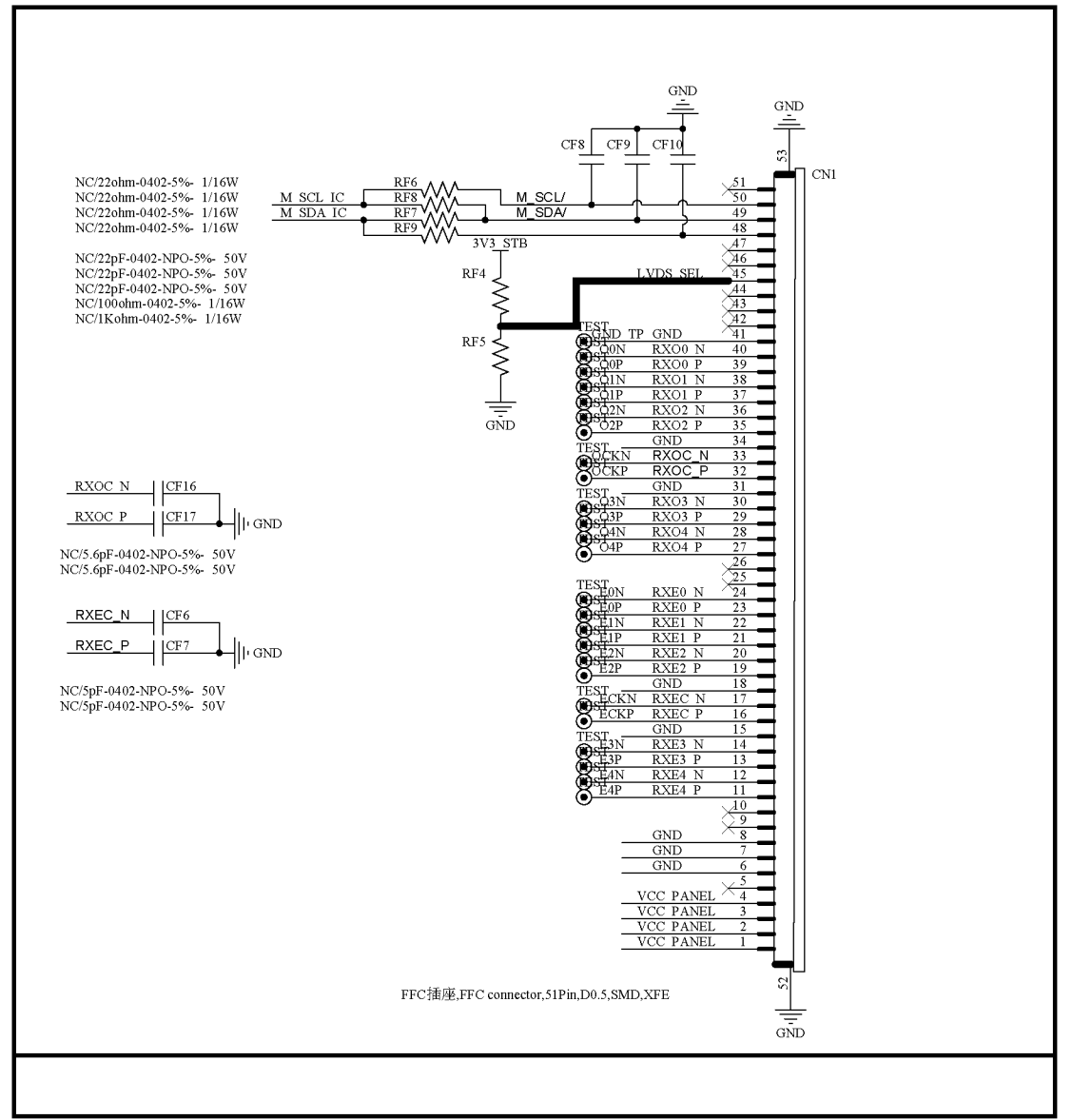
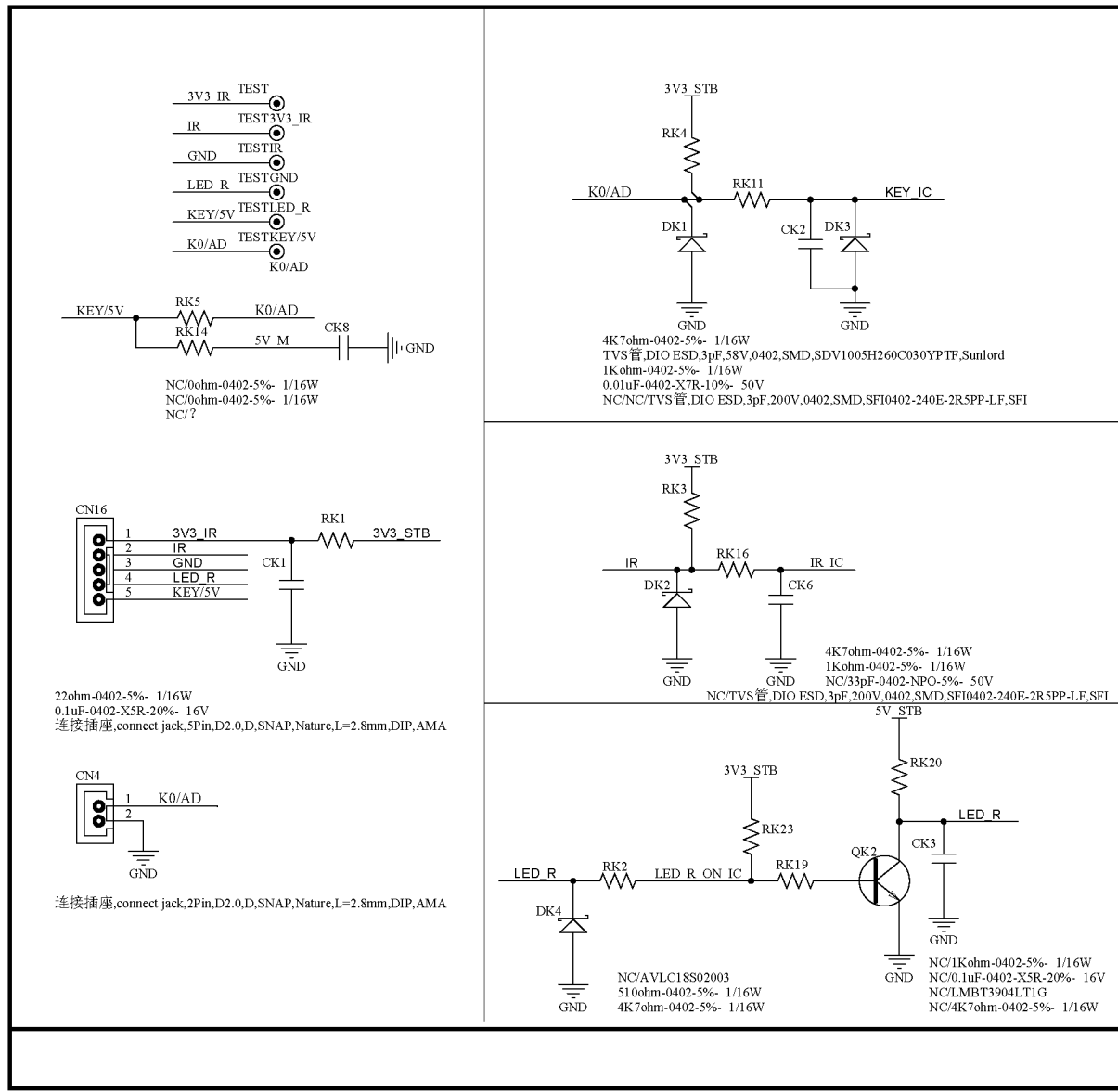
D

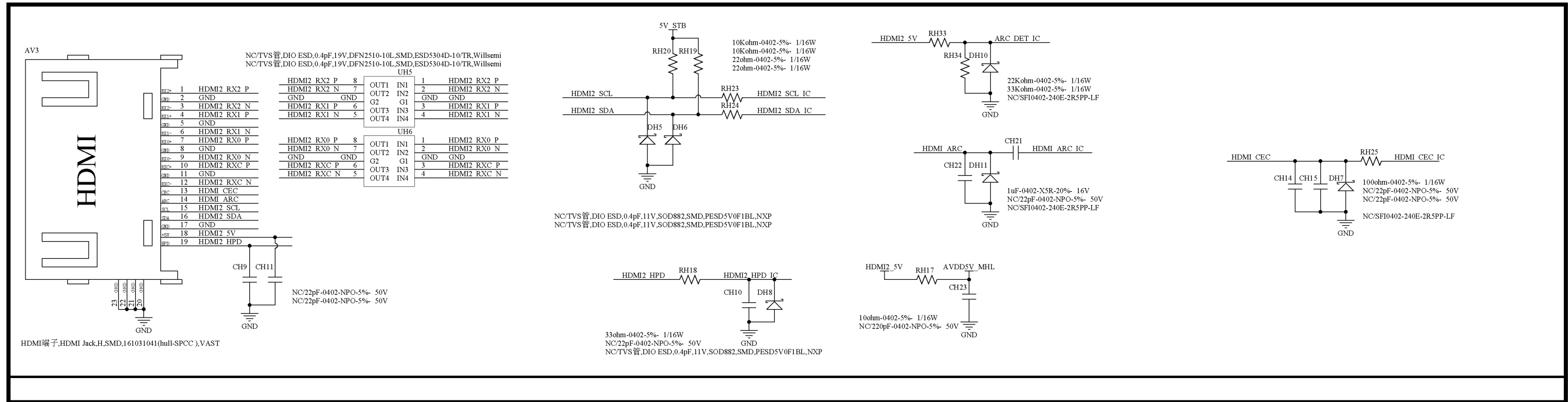
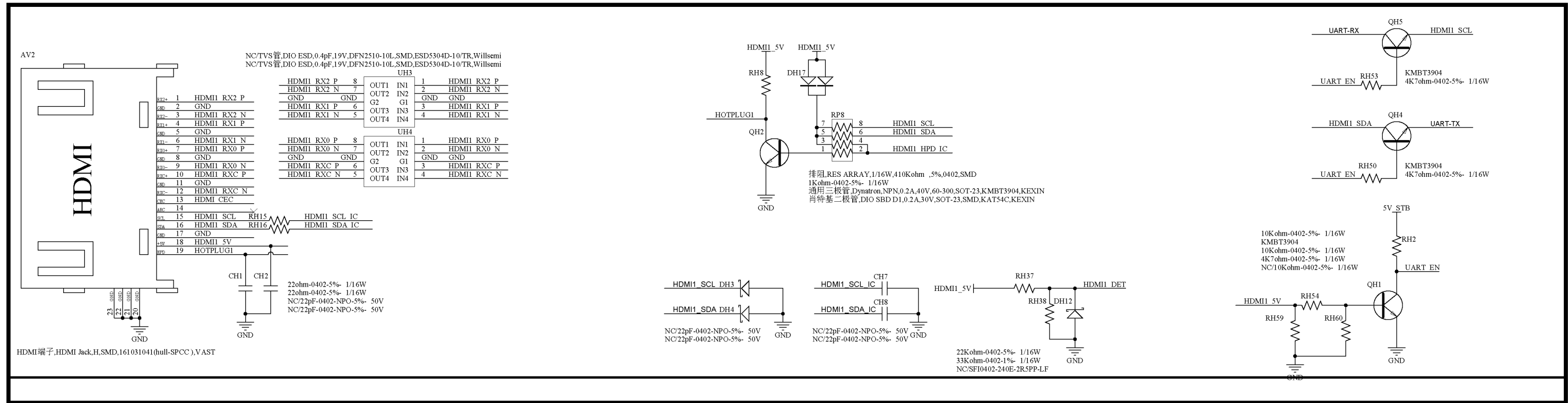
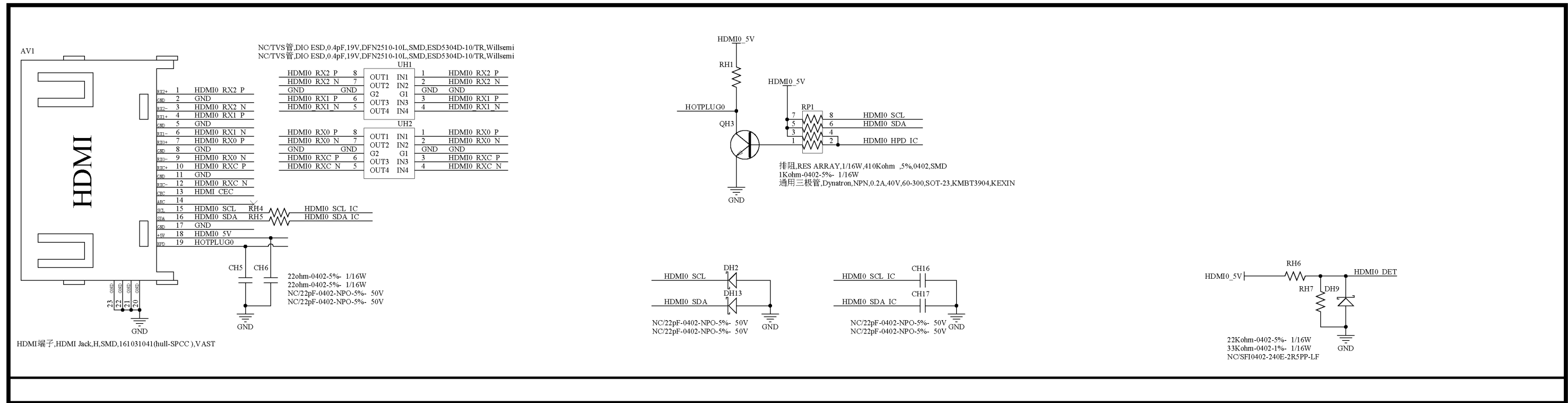
A

B

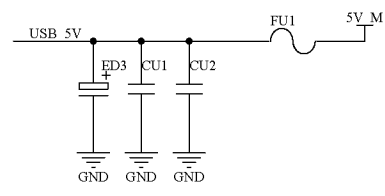
C

D

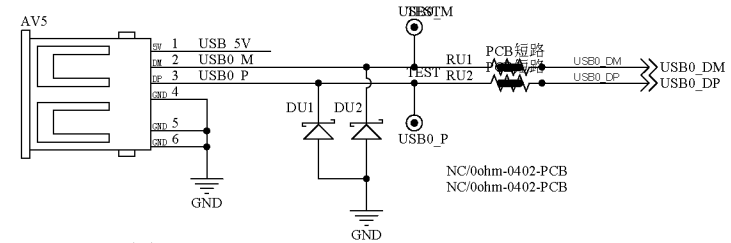




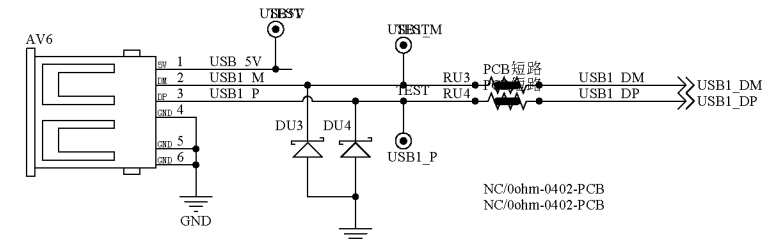
A



10uF-0805-X5R-20%- 16V
 10uF-0805-X5R-20%- 16V
 NSMD110(1206-1.1A)
 NC/铝电解电容_CAP AL,16V,220uF,20%,HV,P,6.37.7,SMD,TP,CapXon



NC/0ohm-0402-PCB
 NC/0ohm-0402-PCB
 USB端子,USB Jack,H,Single.flange,DIP,WLUS-050F USB,WLCO
 NC/NC/AIES12U020R2-D
 NC/NC/AIES12U020R2-D



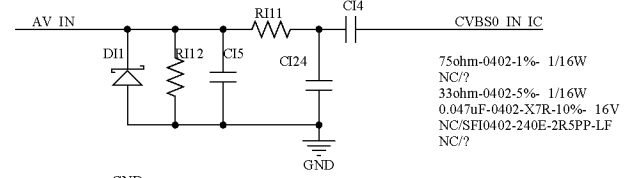
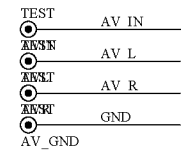
NC/0ohm-0402-PCB
 NC/0ohm-0402-PCB
 USB端子,USB Jack,H,Single.flange,DIP,WLUS-050F USB,WLCO
 NC/AIES12U020R2-D
 NC/AIES12U020R2-D

B

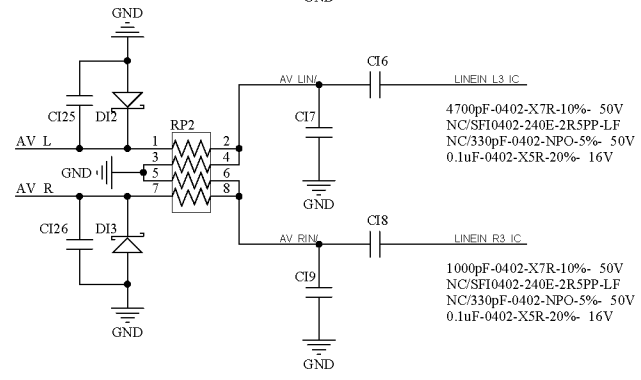
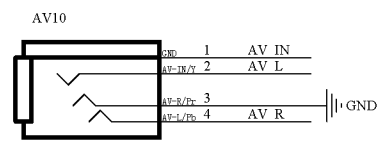
A

B

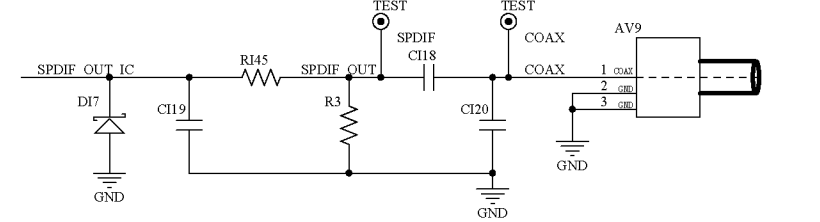
C



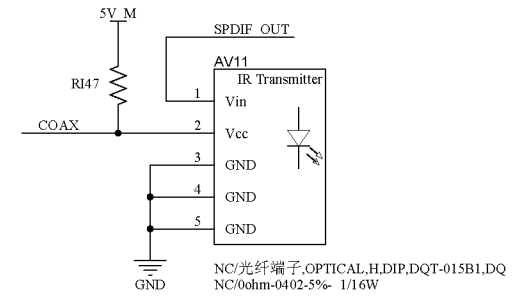
75ohm-0402-1%- 1/16W
 NC/?
 33ohm-0402-5%- 1/16W
 0.047uF-0402-X7R-10%- 16V
 NC/SF10402-240E-2R5PP-LF
 NC/?



挂阻_RES ARRAY,1/16W,410Kohm .5%,0402,SMD
 耳机端子_Earphone Jack,H,Φ3.5,CH2.5,Black,Seal,DIP,PJ-320C-5.0,JSL



NC/SF10402-240E-2R5PP-LF
 180ohm-0402-5%- 1/16W
 120ohm-0402-1%- 1/16W
 NC/33pF-0402-NPO-5%- 50V
 0.1uF-0402-X5R-20%- 16V
 330pF-0402-NPO-5%- 50V
 RCA端子,RCA Jack,AV1,H,Orange,CH5.5,Seal,DIP,RCA-143-EP-07,CS

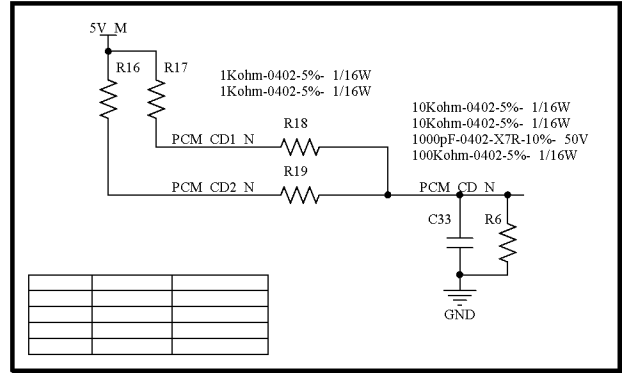
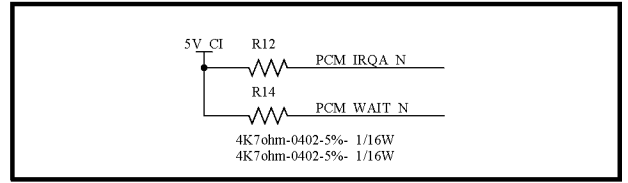
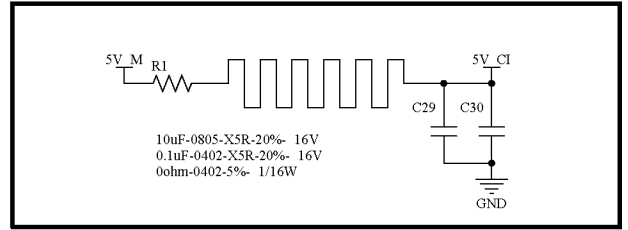
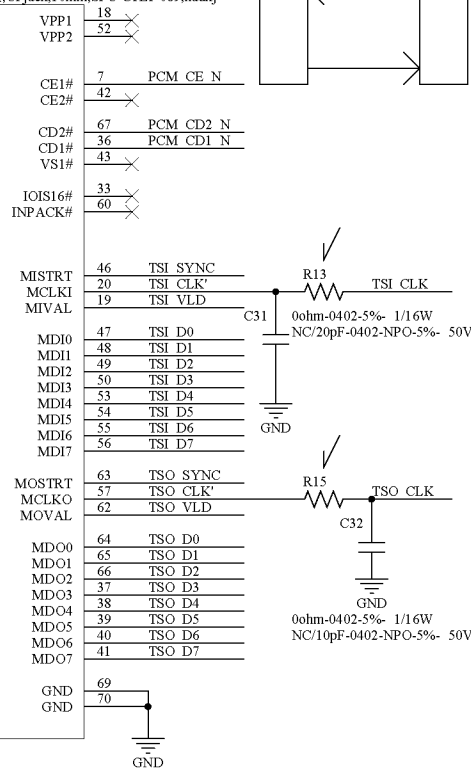
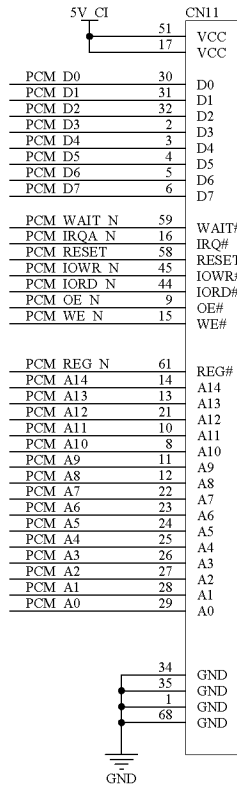


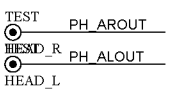
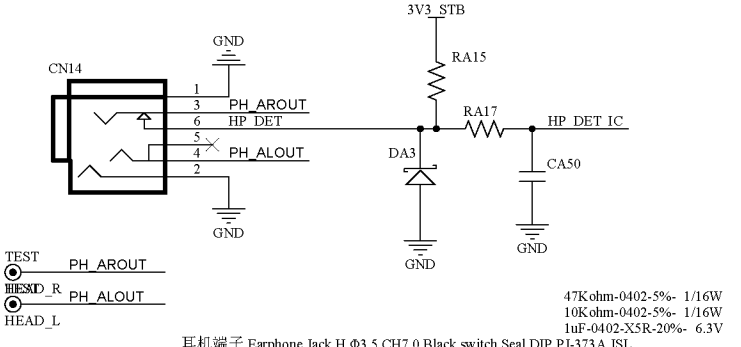
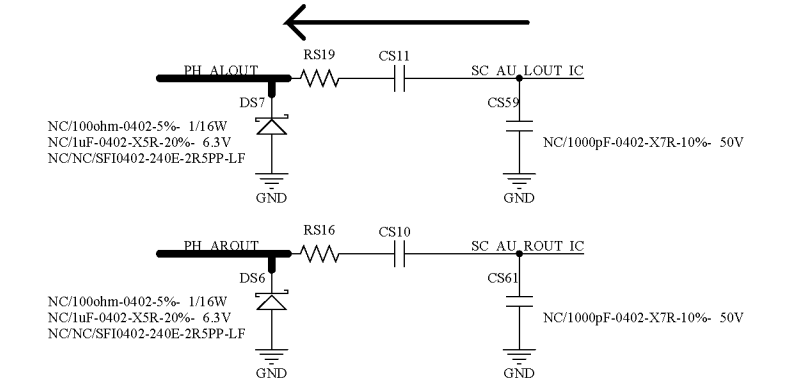
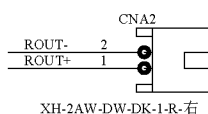
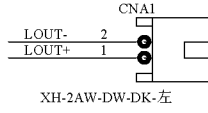
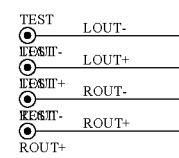
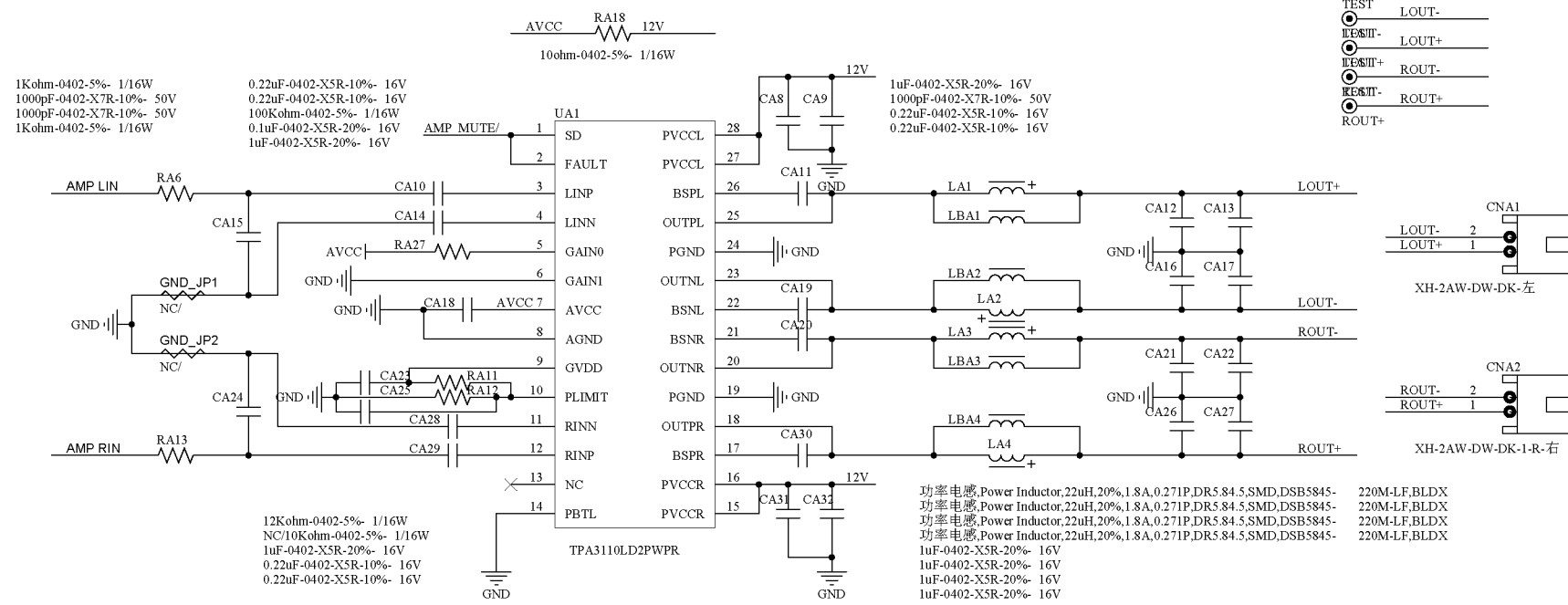
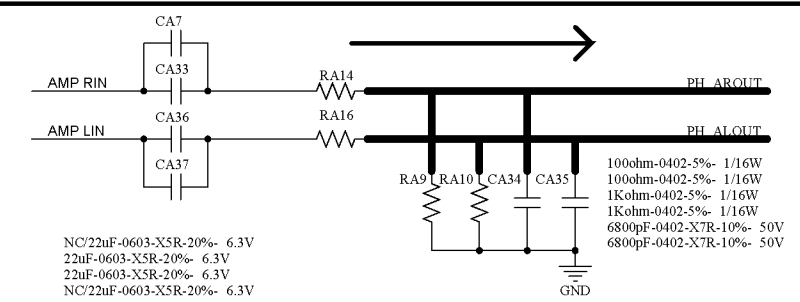
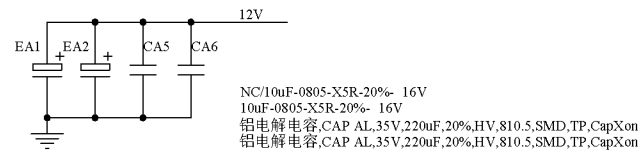
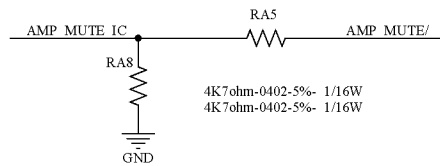
NC/光纤端子,OPTICAL,H,DIP,DQT-015B1,DQ
 NC/0ohm-0402-5%- 1/16W

D

C

D





耳机端子, Earphone Jack, H, Φ3.5, CH7.0, Black, switch, Seal, DIP, PJ-373 A, JSL

NC/SF10402-240E-2R5PP-LF

